



## FOR LEASE OR SALE | OFFICE / R&D BUILDING

### PROPERTY HIGHLIGHTS

## 625 Avis Drive | Ann Arbor, MI

- 48,673 Square Foot Building
- 16,000-48,673 Square Feet Available
- Beautiful Auditorium in Place
- Quick Access to I94 & US-23
- Back-up Emergency Generator
- Full Kitchen & Cafeteria in Place
- 10.87 Acre Site- Room to Expand
- Gorgeous Wooded Setting on a Lake
- Plenty of Parking
- Heavy Electrical – 1600 Amps

**John T. Fricke**

+1 248 872 7820  
john.fricke@colliers.com

**Jonathan Loos**

+1 734 787 8672  
jonathan.loos@colliers.com

**Patrich Jett**

+1 734 660 0763  
patrich.jett@colliers.com

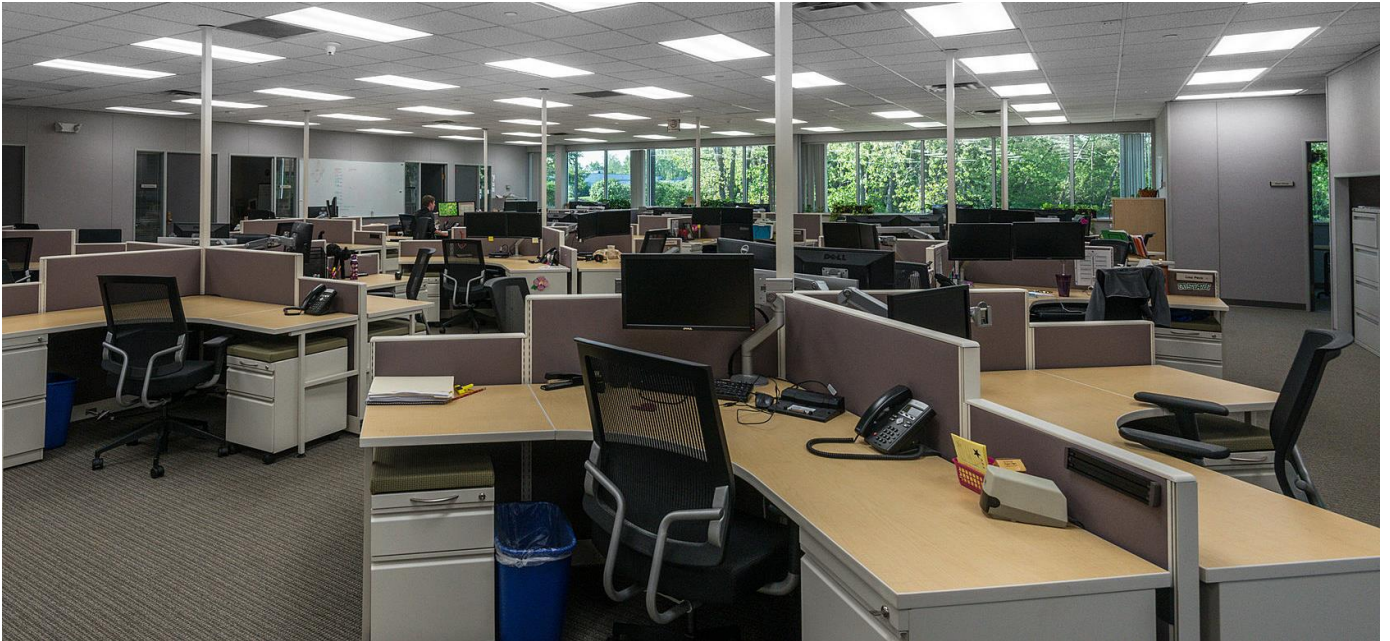
# PROPERTY PHOTOS

**FOR LEASE OR SALE** | OFFICE / R&D BUILDING  
625 Avis Drive | Ann Arbor, MI



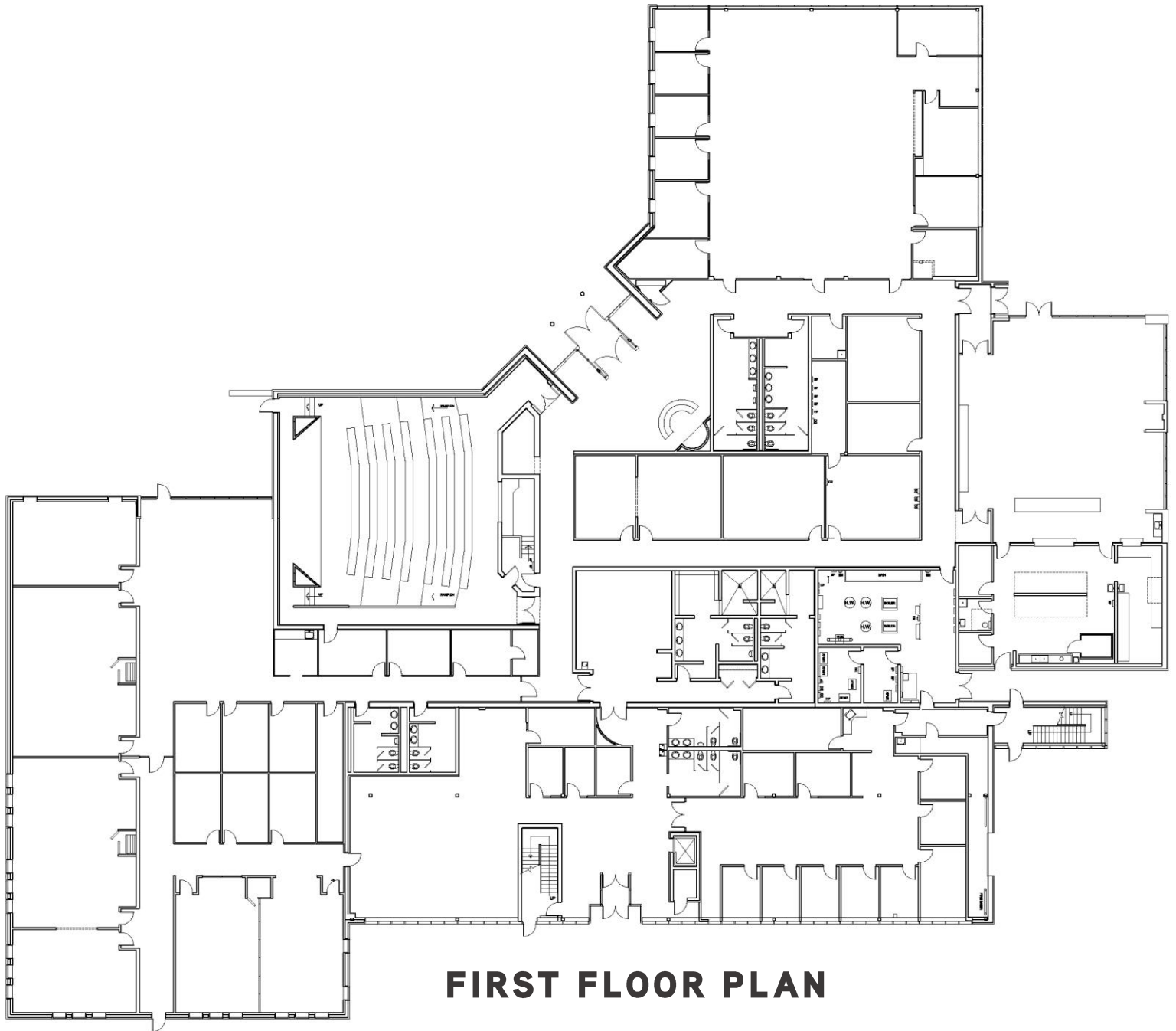
# PROPERTY PHOTOS

**FOR LEASE OR SALE** | OFFICE / R&D BUILDING  
625 Avis Drive | Ann Arbor, MI



# FLOOR PLAN

FOR LEASE OR SALE | OFFICE / R&D BUILDING  
625 Avis Drive | Ann Arbor, MI



**FIRST FLOOR PLAN**

**John T. Fricke**

+1 248 872 7820

john.fricke@colliers.com

**Jonathan Loos**

+1 734 787 8672

jonathan.loos@colliers.com

**Patrich Jett**

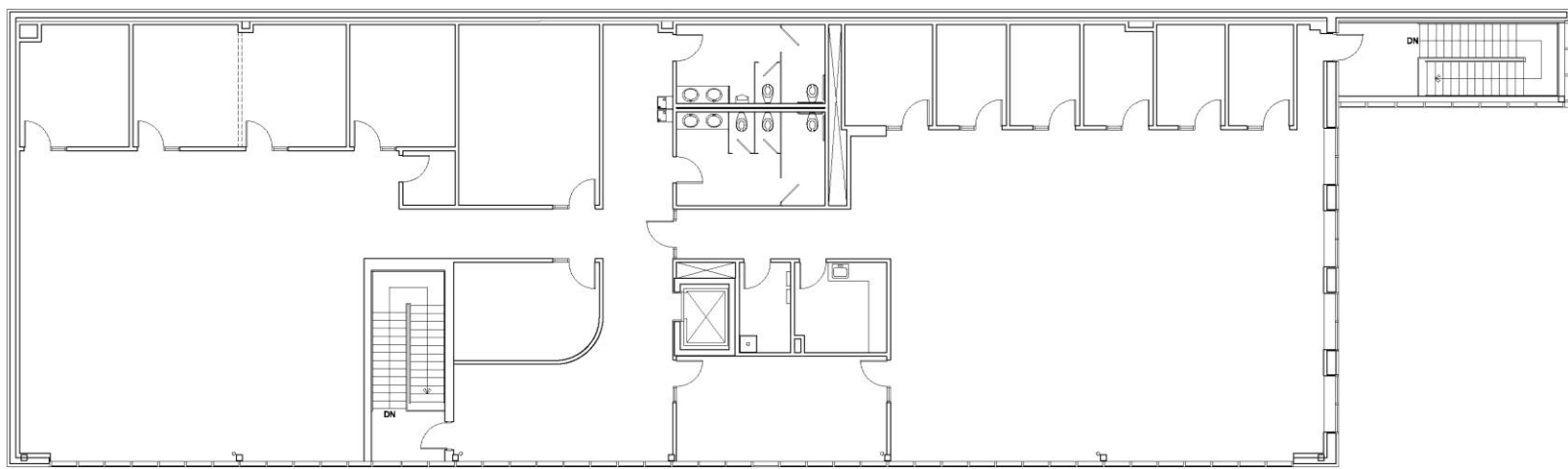
+1 734 660 0763

patrich.jett@colliers.com



# FLOOR PLAN

**FOR LEASE OR SALE** | OFFICE / R&D BUILDING  
625 Avis Drive | Ann Arbor, MI



## SECOND FLOOR PLAN

**John T. Fricke**

+1 248 872 7820

john.fricke@colliers.com

**Jonathan Loos**

+1 734 787 8672

jonathan.loos@colliers.com

**Patrich Jett**

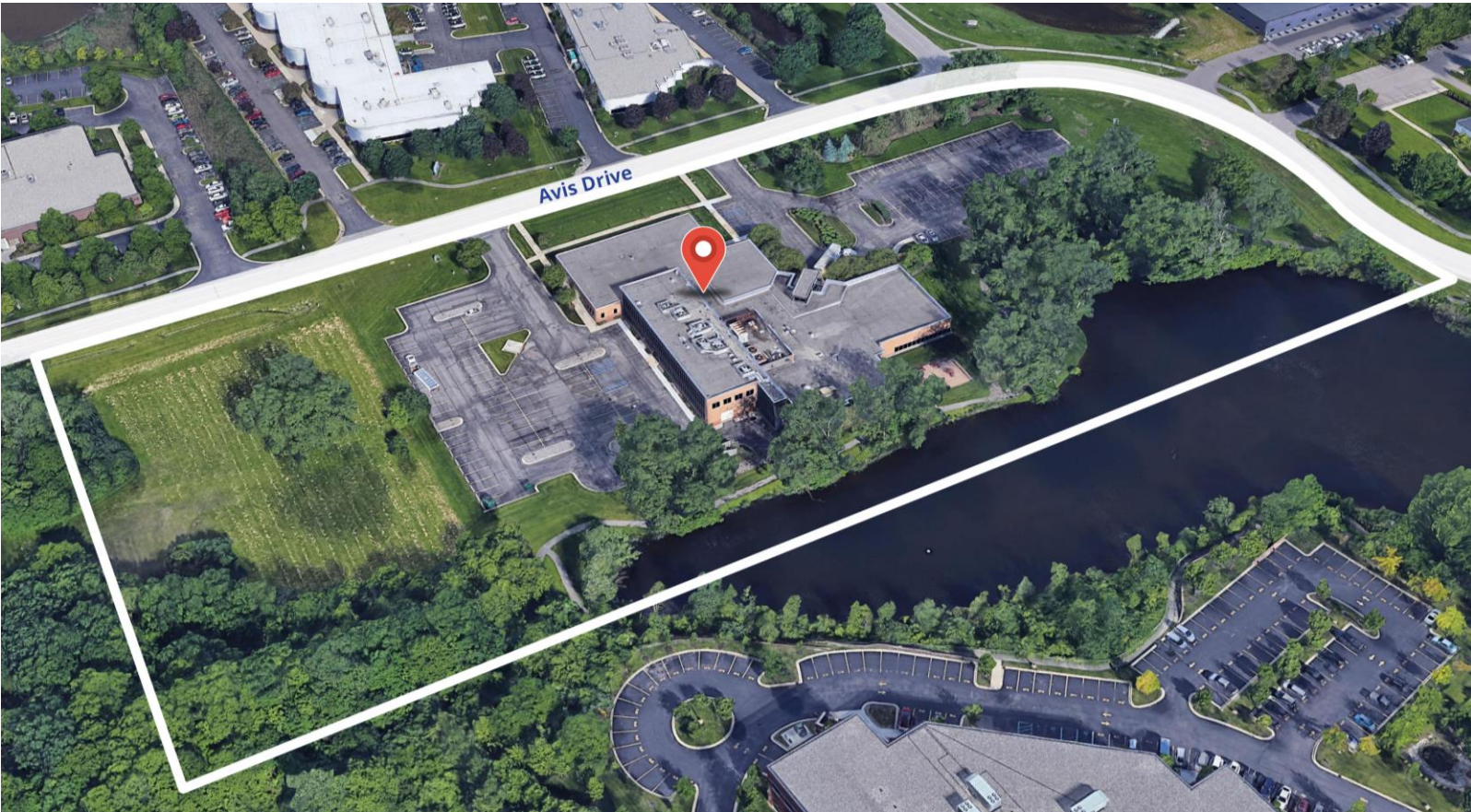
+1 734 660 0763

patrich.jett@colliers.com



# AERIAL MAP

**FOR LEASE OR SALE** | OFFICE / R&D BUILDING  
625 Avis Drive | Ann Arbor, MI



**John T. Fricke**

+1 248 872 7820

[john.fricke@colliers.com](mailto:john.fricke@colliers.com)

**Jonathan Loos**

+1 734 787 8672

[jonathan.loos@colliers.com](mailto:jonathan.loos@colliers.com)

**Patrich Jett**

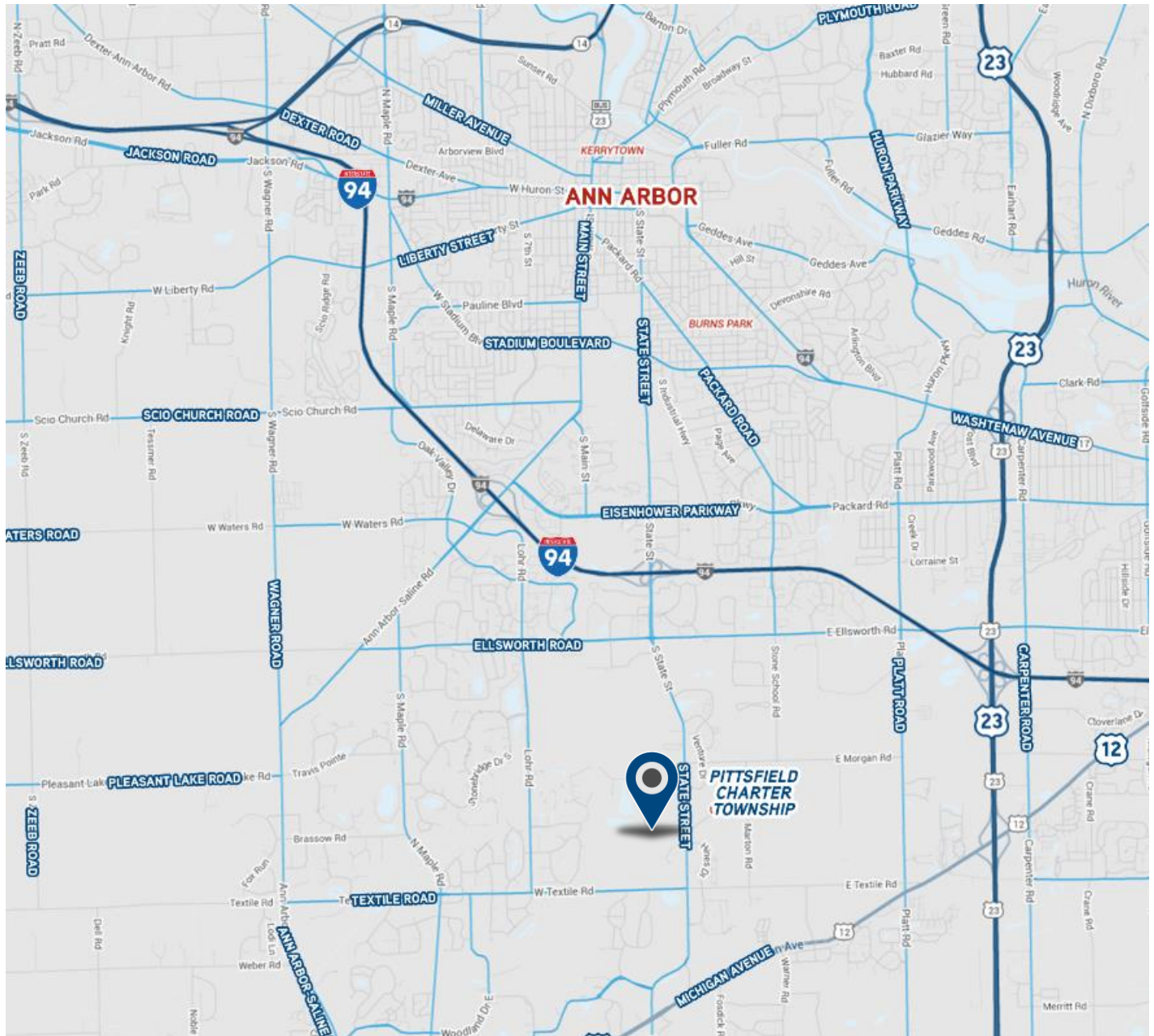
+1 734 660 0763

[patrich.jett@colliers.com](mailto:patrich.jett@colliers.com)



# LOCATION MAP

**FOR LEASE OR SALE** | OFFICE / R&D BUILDING  
625 Avis Drive | Ann Arbor, MI



**John T. Fricke**

+1 248 872 7820

[john.fricke@colliers.com](mailto:john.fricke@colliers.com)

**Jonathan Loos**

+1 734 787 8672

[jonathan.loos@colliers.com](mailto:jonathan.loos@colliers.com)

**Patrich Jett**

+1 734 660 0763

[patrich.jett@colliers.com](mailto:patrich.jett@colliers.com)

